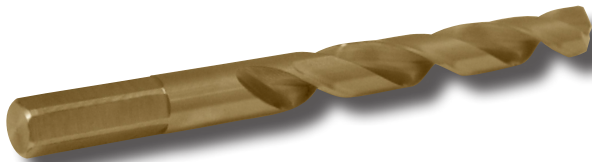


NEW Products

C **CLE-LINE.**
Hex Shank 
Jobber Drills and Set



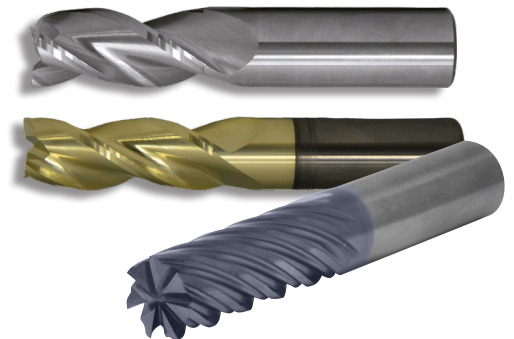
C **CLE-LINE.**
TiN Tipped
Jobber Drills



GT **+5**
GREENFIELD
THREADING
Spiral Point and
Spiral Flute Taps



C **CLEVELAND**
Aluminum End Mills





Hex Shank

NEW

Hex Shank Jobber Drills and Set

®



CLE-LINE.

29 Sizes:

1/16" - 1/2" x 1/64"

- Hexagonal Flatted Shank
- Cobalt Jobber Drills
- Straw Oxide
- 118° Split Point
- Regular Helix 21° to 34°

Dimensional information
and part numbers on reverse side.

29 Piece Set

All Sizes Available in a
Convenient Set.



Greenfield Industries, Inc.
2501 Davis Creek Road, Seneca, SC 29678 USA
standard.distributors@gfi.com national.distributors@gfi.com
Phone 800.348.2885 • Fax 800.892.4290





NEW

Hex Shank Jobber Drills

Style: 1804

- Hexagonal Flatted Shank
- Cobalt Jobber Drills
- Straw Oxide
- 118° Split Point
- Regular Helix 21° to 34°

Note

11/64" and smaller have a straight shank with no flats.
3/16" and larger have a straight shank with 6 flats.



drill diameter	decimal equivalent	overall length	flat length	order number
1/16	.0625	1.875	—	1804 straw C10600
5/64	.0781	2.000	—	C10601
3/32	.0938	2.250	—	C10602
7/64	.1094	2.625	—	C10603
1/8	.1250	2.750	—	C10604
9/64	.1406	2.875	—	C10605
5/32	.1562	3.125	—	C10606
11/64	.1719	3.250	—	C10607
3/16	.1875	3.500	1.125	C10608
13/64	.2031	3.625	1.125	C10609
7/32	.2188	3.750	1.125	C10610
15/64	.2344	3.875	1.125	C10611
1/4	.2500	4.000	1.125	C10612
17/64	.2656	4.125	1.125	C10613
9/32	.2812	4.250	1.125	C10614
19/64	.2969	4.375	1.125	C10615
5/16	.3125	4.500	1.125	C10616
21/64	.3281	4.625	1.125	C10617
11/32	.3438	4.750	1.125	C10618
23/64	.3594	4.875	1.125	C10619
3/8	.3750	5.000	1.125	C10620
25/64	.3906	5.125	1.125	C10621
13/32	.4062	5.250	1.125	C10622
27/64	.4219	5.375	1.125	C10623
7/16	.4375	5.500	1.125	C10624
29/64	.4531	5.625	1.125	C10625
15/32	.4688	5.750	1.125	C10626
31/64	.4844	5.875	1.125	C10627
1/2	.5000	6.000	1.125	C10628

SET

Style: 1804

Jobber - Inch
Hex Shank, Cobalt

Bit Barrel



drill sizes	no. of pieces	order number
1/16"– 1/2" x 1/64"	29	1804 straw C10629



Jobber
TiN Tip

General Application Drills



Styles: **1500-TT, 1501-TT**



NEW

Available in late 2018



drill diameter frac/wire/let	decimal equivalent	overall length	flute length	order number	
				1500-TT HSS TiN	1501-TT HS-Co TiN
56	.0465	1-3/4	3/4	C97410	C66110
3/64	.0469	1-3/4	3/4	C97300	C66000
55	.0520	1-7/8	7/8	C97409	C66109
54	.0550	1-7/8	7/8	C97408	C66108
53	.0595	1-7/8	7/8	C97407	C66107
1/16	.0625	1-7/8	7/8	C97301	C66001
52	.0635	1-7/8	7/8	C97406	C66106
51	.0670	2	1	C97405	C66105
50	.0700	2	1	C97404	C66104
49	.0730	2	1	C97403	C66103
48	.0760	2	1	C97402	C66102
5/64	.0781	2	1	C97302	C66002
47	.0785	2	1	C97401	C66101
46	.0810	2-1/8	1-1/8	C97400	C66100
45	.0820	2-1/8	1-1/8	C97399	C66099
44	.0860	2-1/8	1-1/8	C97398	C66098
43	.0890	2-1/4	1-1/4	C97397	C66097
42	.0935	2-1/4	1-1/4	C97396	C66096
3/32	.0938	2-1/4	1-1/4	C97303	C66003
41	.0960	2-3/8	1-3/8	C97395	C66095
40	.0980	2-3/8	1-3/8	C97394	C66094
39	.0995	2-3/8	1-3/8	C97393	C66093
38	.1015	2-1/2	1-7/16	C97392	C66092
37	.1040	2-1/2	1-7/16	C97391	C66091
36	.1065	2-1/2	1-7/16	C97390	C66090
7/64	.1094	2-5/8	1-1/2	C97304	C66004
35	.1100	2-5/8	1-1/2	C97389	C66089
34	.1110	2-5/8	1-1/2	C97388	C66088
33	.1130	2-5/8	1-1/2	C97387	C66087
32	.1160	2-3/4	1-5/8	C97386	C66086
31	.1200	2-3/4	1-5/8	C97385	C66085
1/8	.1250	2-3/4	1-5/8	C97305	C66005
30	.1285	2-3/4	1-5/8	C97384	C66084
29	.1360	2-7/8	1-3/4	C97383	C66083
28	.1405	2-7/8	1-3/4	C97382	C66082
9/64	.1406	2-7/8	1-3/4	C97306	C66006
27	.1440	3	1-7/8	C97381	C66081
26	.1470	3	1-7/8	C97380	C66080
25	.1495	3	1-7/8	C97379	C66079
24	.1520	3-1/8	2	C97378	C66078
23	.1540	3-1/8	2	C97377	C66077
5/32	.1562	3-1/8	2	C97307	C66007

continued on next page

drill diameter frac/wire/let	decimal equivalent	overall length	flute length	order number	
				1500-TT HSS TiN	1501-TT HS-Co TiN
22	.1570	3-1/8	2	C97376	C66076
21	.1590	3-1/4	2-1/8	C97375	C66075
20	.1610	3-1/4	2-1/8	C97374	C66074
19	.1660	3-1/4	2-1/8	C97373	C66073
18	.1695	3-1/4	2-1/8	C97372	C66072
11/64	.1719	3-1/4	2-1/8	C97308	C66008
17	.1730	3-3/8	2-3/16	C97371	C66071
16	.1770	3-3/8	2-3/16	C97370	C66070
15	.1800	3-3/8	2-3/16	C97369	C66069
14	.1820	3-3/8	2-3/16	C97368	C66068
13	.1850	3-1/2	2-5/16	C97367	C66067
3/16	.1875	3-1/2	2-5/16	C97309	C66009
12	.1890	3-1/2	2-5/16	C97366	C66066
11	.1910	3-1/2	2-5/16	C97365	C66065
10	.1935	3-5/8	2-7/16	C97364	C66064
9	.1960	3-5/8	2-7/16	C97363	C66063
8	.1990	3-5/8	2-7/16	C97362	C66062
7	.2010	3-5/8	2-7/16	C97361	C66061
13/64	.2031	3-5/8	2-7/16	C97310	C66010
6	.2040	3-3/4	2-1/2	C97360	C66060
5	.2055	3-3/4	2-1/2	C97359	C66059
4	.2090	3-3/4	2-1/2	C97358	C66058
3	.2130	3-3/4	2-1/2	C97357	C66057
7/32	.2188	3-3/4	2-1/2	C97311	C66011
2	.2210	3-7/8	2-5/8	C97356	C66056
1	.2280	3-7/8	2-5/8	C97355	C66055
A	.2340	3-7/8	2-5/8	C97330	C66030
15/64	.2344	3-7/8	2-5/8	C97312	C66012
B	.2380	4	2-3/4	C97331	C66031
C	.2420	4	2-3/4	C97332	C66032
D	.2460	4	2-3/4	C97333	C66033
1/4-E	.2500	4	2-3/4	C97313	C66013
F	.2570	4-1/8	2-7/8	C97334	C66034
G	.2610	4-1/8	2-7/8	C97335	C66035
17/64	.2656	4-1/8	2-7/8	C97314	C66014
H	.2660	4-1/8	2-7/8	C97336	C66036
I	.2720	4-1/8	2-7/8	C97337	C66037
J	.2770	4-1/8	2-7/8	C97338	C66038
K	.2810	4-1/4	2-15/16	C97339	C66039
9/32	.2812	4-1/4	2-15/16	C97315	C66015
L	.2900	4-1/4	2-15/16	C97340	C66040
M	.2950	4-3/8	3-1/16	C97341	C66041
19/64	.2969	4-3/8	3-1/16	C97316	C66016
N	.3020	4-3/8	3-1/16	C97342	C66042
5/16	.3125	4-1/2	3-3/16	C97317	C66017
O	.3160	4-1/2	3-3/16	C97343	C66043
P	.3230	4-5/8	3-5/16	C97344	C66044
21/64	.3281	4-5/8	3-5/16	C97318	C66018
Q	.3320	4-3/4	3-7/16	C97345	C66045
R	.3390	4-3/4	3-7/16	C97346	C66046
11/32	.3438	4-3/4	3-7/16	C97319	C66019
S	.3480	4-7/8	3-1/2	C97347	C66047
T	.3580	4-7/8	3-1/2	C97348	C66048
23/64	.3594	4-7/8	3-1/2	C97320	C66020

continued on next page

Jobber
TiN Tip

General Application Drills



Styles: **1500-TT, 1501-TT**

HOLEMAKING

drill diameter frac/wire/let	decimal equivalent	overall length	flute length	order number	
				1500-TT HSS TiN	1501-TT HS-Co TiN
U	.3680	5	3-5/8	C97349	C66049
3/8	.3750	5	3-5/8	C97321	C66021
V	.3770	5	3-5/8	C97350	C66050
W	.3860	5-1/8	3-3/4	C97351	C66051
25/64	.3906	5-1/8	3-3/4	C97322	C66022
X	.3970	5-1/8	3-3/4	C97352	C66052
Y	.4040	5-1/4	3-7/8	C97353	C66053
13/32	.4062	5-1/4	3-7/8	C97323	C66023
Z	.4130	5-1/4	3-7/8	C97354	C66054
27/64	.4219	5-3/8	3-15/16	C97324	C66024
7/16	.4375	5-1/2	4-1/16	C97325	C66025
29/64	.4531	5-5/8	4-3/16	C97326	C66026
15/32	.4688	5-3/4	4-5/16	C97327	C66027
31/64	.4844	5-7/8	4-3/8	C97328	C66028
1/2	.5000	6	4-1/2	C97329	C66029

Jobber
TiN Tip

SET

Styles: **1500-TT, 1501-TT**

Metal Case

NEW

Available in late 2018

drill sizes	no. of pieces	order number	
		1500-TT HSS TiN	1501-TT HS-Co TiN
#1 - #56	56	C97411	C66111
Ltr A - Z	26	C97412	C66112
1/16-1/2 x 1/64	29	C97413	C66113
1/16 - 1/2 x 1/32	15	C97414	C66114



Spiral Point Taps for Through Holes

Style: **SPGP+5**

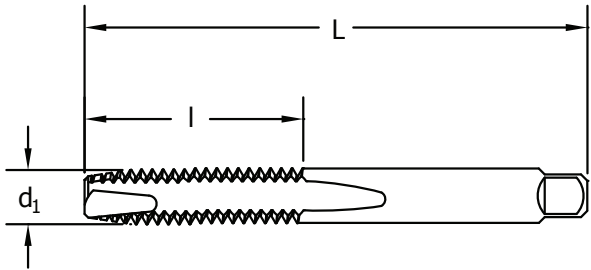
General Purpose
Spiral Point *plus 5* - Inch

NEW

P N

Thru Holes Straight Flute Plug 3-5 302 HSS Bright Black Oxide

Note
Tapping speeds - see page 39-41.



Machine Taps
Spiral Point Taps
Spiral Flute Taps
Thread Forming Taps
Pipe Taps
Dies

diameter & pitch	thread form	d ₁ mm	number of flutes	H-limit	L in	I in	order number plug	
							Bright	Black Oxide
6-32	UNF	.1065	2	H11	2.000	.6875	313610	313616
8-32	UNF	.1360	2	H11	2.125	.7500	313611	313617
10-24	UNC	.1470	2	H11	2.375	.8750	313612	131618
10-32	UNF	.1590	2	H11	2.375	.8750	313613	131619
1/4-20	UNC	.2500	3	H11	2.500	1.000	313500	313555
1/4-28	UNF	.2500	3	H11	2.500	1.000	313501	313556
5/16-18	UNC	.3125	3	H11	2.719	1.125	313502	313557
5/16-24	UNF	.3125	3	H11	2.719	1.125	313503	313558
3/8-16	UNC	.3750	3	H11	2.938	1.250	313504	313559
3/8-24	UNF	.3750	3	H11	2.938	1.250	313505	313560
7/16-14	UNC	.4375	3	H11	3.156	1.438	313506	313561
7/16-20	UNF	.4375	3	H11	3.156	1.438	313507	313562
1/2-13	UNC	.5000	3	H11	3.375	1.656	313508	313563
1/2-20	UNF	.5000	3	H11	3.375	1.656	313509	313564
5/8-11	UNC	.6250	3	H11	3.813	1.813	313510	313565
5/8-18	UNF	.6250	3	H11	3.813	1.813	313511	313566
3/4-10	UNC	.7500	4	H11	4.250	2.000	313512	313567
3/4-16	UNF	.7500	4	H11	4.250	2.000	313513	313568

Technical Info
Sets
Index

Style: **SPGP+5**

Metric - General Purpose
Spiral Point *plus 5* - Metric

d ₁ diameter & pitch	number of flutes	D-limit	L in	I in	order number plug	
					Bright	Black Oxide
M4x0.7	2	D11	2.125	.7500	313614	313620
M5x0.8	2	D11	2.375	.8750	313615	313621
M6x1	3	D11	2.500	1.000	313514	313569
M8x1	3	D11	2.719	1.125	313515	313570
M8x1.25	3	D11	2.719	1.125	313516	313571
M10x1	3	D11	2.938	1.25	313517	313572
M10x1.25	3	D11	2.938	1.25	313518	313573
M10x1.5	3	D11	2.938	1.25	313519	313574
M12x1.25	3	D11	3.375	1.656	313520	313575
M12x1.5	3	D11	3.375	1.656	313521	313576
M12x1.75	3	D11	3.375	1.656	313522	313577
M16x1.5	3	D11	3.813	1.813	313523	313578
M16x2	3	D11	3.813	1.813	313524	313579

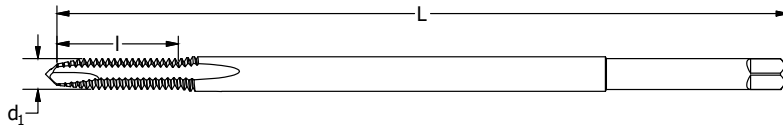
General Purpose
Extended Length (6")

Spiral Point Taps for Through Holes

Style: **SPGPX**



Note
Tapping speeds - see page 39-41.



diameter & pitch	thread form	d ₁ in	number of flutes	H-limit	L in	I in	order number
8-32	UNC	.1640	2	H3	6.000	.750	918932
10-24	UNC	.1900	2	H3	6.000	.875	918934
10-32	UNF	.1900	2	H3	6.000	.875	918935
1/4-20	UNC	.2500	2	H3	6.000	1.000	918936
1/4-28	UNF	.2500	2	H3	6.000	1.000	918937
5/16-18	UNC	.3125	2	H3	6.000	1.125	918938
5/16-24	UNF	.3125	2	H3	6.000	1.125	918939
3/8-16	UNC	.3750	3	H3	6.000	1.250	918940
3/8-24	UNF	.3750	3	H3	6.000	1.250	918941

NEW

General Purpose - Inch
Extended Length (6") *plus 5*

Style: **SPGPX+5**



Note
Tapping speeds - see page 39-41.

diameter & pitch	thread form	d ₁ in	number of flutes	H-limit	L in	I in	order number	
							Bright	Black Oxide
1/4-20	UNC	.2500	3	H11	6"	1.0000	313544	313599
5/16-18	UNC	.3125	3	H11	6"	1.1250	313545	313600
3/8-16	UNC	.3750	3	H11	6"	1.2500	313546	313601
7/16-14	UNC	.4375	3	H11	6"	1.4375	313547	313602
1/2-13	UNC	.5000	3	H11	6"	1.6562	313548	313603
5/8-11	UNC	.6250	3	H11	6"	1.8125	313549	313604

NEW

General Purpose - Metric
Extended Length (6") *plus 5*

Style: **SPGPX+5**



Note
Tapping speeds - see page 39-41.

d ₁ diameter & pitch	number of flutes	D-limit	L in	I in	order number	
					Bright	Black Oxide
M6x1	3	D11	6"	1.0000	313550	313605
M8x1.25	3	D11	6"	1.1250	313551	313606
M10x1.5	3	D11	6"	1.2500	313552	313607
M12x1.75	3	D11	6"	1.6562	313553	313608
M16x2	3	D11	6"	1.8125	313554	313609



Spiral Flute Taps for Blind Holes

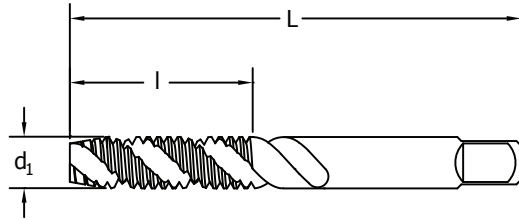
Style: **SFGP+5**

General Purpose Spiral Flute

Plus 5 - Inch



Note
Tapping speeds - see page 39-41.



Machine Taps

Spiral Point Taps

Spiral Flute Taps

Thread Forming Taps

Pipe Taps

Dies

Technical Info

Sets

Index

diameter & pitch	thread form	d ₁ in	number of flutes	H-limit	L in	I in	order number semi bottoming	
							Bright	Black Oxide
1/4-20	UNC	.2500	3	H11	2.500	1.000	313525	313580
1/4-28	UNF	.2500	3	H11	2.500	1.000	313526	313581
5/16-18	UNC	.3125	3	H11	2.719	1.125	313527	313582
5/16-24	UNF	.3125	3	H11	2.719	1.125	313528	313583
3/8-16	UNC	.3750	3	H11	2.938	1.250	313529	313584
3/8-24	UNF	.3750	3	H11	2.938	1.250	313530	313585
7/16-14	UNC	.4375	3	H11	3.156	1.438	313531	313586
7/16-20	UNF	.4375	3	H11	3.156	1.438	313532	313587
1/2-13	UNC	.5000	3	H11	3.375	1.656	313533	313588
1/2-20	UNF	.5000	3	H11	3.375	1.656	313534	313589
5/8-11	UNC	.6250	3	H11	3.813	1.813	313535	313590
5/8-18	UNF	.6250	3	H11	3.813	1.813	313536	313591
3/4-10	UNC	.7500	4	H11	4.250	2.000	313537	313592
3/4-16	UNF	.7500	4	H11	4.250	2.000	313538	313593

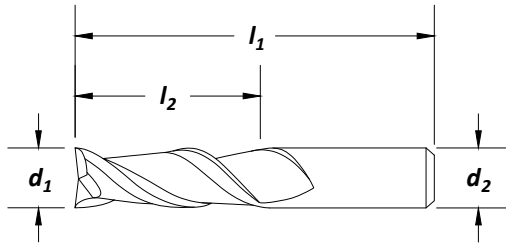
Style: **SFGP+5**

General Purpose Spiral Flute

Plus 5 - Metric

d ₁ diameter & pitch	number of flutes	D-limit	L in	I in	order number semi bottoming	
					Bright	Black Oxide
M6x1	3	D11	2.500	1.00	313539	313594
M8x1.25	3	D11	2.719	1.125	313540	313595
M10x1.5	3	D11	2.938	1.25	313541	313596
M12x1.75	3	D11	3.375	1.656	313542	313597
M16x2	3	D11	3.813	1.813	313543	313598

Style: CEM-AM2
Aluminum Materials

Surface Treatment


cutting diameter		shank diameter	length of cut	overall length	no. of flutes	order number	
fractional	decimal	d_2	l_2 (in)	l_1 (in)		CEM-AM2	
						bright	ZrN
1/8	.1250	1/8	1/4	1-1/2	2	C60477	C84000
1/8	.1250	1/8	3/8	1-1/2	2	C60478	C84001
3/16	.1875	3/16	5/16	2	2	C60479	C84002
3/16	.1875	3/16	9/16	2	2	C60480	C84003
1/4	.2500	1/4	3/8	2-1/2	2	C60481	C84004
1/4	.2500	1/4	3/4	2-1/2	2	C60482	C84005
1/4	.2500	1/4	1-1/4	3	2	C60483	C84006
5/16	.3125	5/16	7/16	2-1/2	2	C60484	C84007
5/16	.3125	5/16	13/16	2-1/2	2	C60485	C84008
5/16	.3125	5/16	1-1/4	3-3/4	2	C60486	C84009
5/16	.3125	5/16	2-1/8	4	2	C60487	C84010
3/8	.3750	3/8	1/2	2-1/2	2	C60488	C84011
3/8	.3750	3/8	1	2-1/2	2	C60489	C84012
3/8	.3750	3/8	1-1/2	4	2	C60490	C84013
3/8	.3750	3/8	2-1/2	6	2	C60491	C84014
7/16	.4375	7/16	9/16	2-1/2	2	C60492	C84015
7/16	.4375	7/16	1	2-1/2	2	C60493	C84016
7/16	.4375	7/16	2	4	2	C60494	C84017
1/2	.5000	1/2	5/8	3	2	C60495	C84018
1/2	.5000	1/2	1-1/4	3	2	C60496	C84019
1/2	.5000	1/2	2	4	2	C60497	C84020
1/2	.5000	1/2	3-1/8	6	2	C60498	C84021
5/8	.6250	5/8	3/4	3-1/2	2	C60499	C84022
5/8	.6250	5/8	1-5/8	4	2	C60500	C84023
5/8	.6250	5/8	2-1/2	5	2	C60501	C84024
5/8	.6250	5/8	3-3/4	6	2	C60502	C84025
3/4	.7500	3/4	1	4	2	C60503	C84026
3/4	.7500	3/4	1-5/8	4	2	C60504	C84027
3/4	.7500	3/4	3-1/4	6	2	C60505	C84028
1	1.0000	1	1-1/4	5	2	C60507	C84029
1	1.0000	1	2	5	2	C60508	C84030
1	1.0000	1	3-1/4	6	2	C60509	C84031
1	1.0000	1	4-1/8	7	2	C60510	C84032

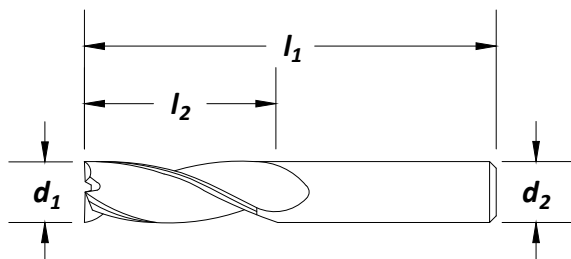
Carbide
Center Cutting

Material Reference	Steel (HRC)		Stainless Steel			Cast Iron (HRC)		Aluminum and Non-Ferrous	Hi-Temp Alloy		Hardened Steel (HRc)
	Low Carbon	Alloy	Austenitic	Martensitic	PH	Gray	Nodular		Ni, Co, Fe Based Super Alloy	Titanium	
	Hardness	13-38	>38	16-38	> 38	300 Series	400 series				
Bright											
ZrN								☆			

☆ = Best Performance ◆ = Acceptable



Surface Treatment



cutting diameter		shank diameter	length of cut	overall length	no. of flutes	order number	
fractional	decimal	d ₂	l ₂ (in)	l ₁ (in)		CEM-AM3	
						bright	ZrN
1/8	.1250	1/8	1/4	1-1/2	3	C60616	C72340
1/8	.1250	1/8	3/8	1-1/2	3	C60617	C72341
3/16	.1875	3/16	5/16	2	3	C60618	C72342
3/16	.1875	3/16	9/16	2	3	C60619	C72343
1/4	.2500	1/4	3/8	2	3	C60620	C72344
1/4	.2500	1/4	3/4	2-1/2	3	C60621	C72345
1/4	.2500	1/4	1-1/4	3	3	C60622	C72346
5/16	.3125	5/16	7/16	2	3	C60623	C72347
5/16	.3125	5/16	5/8	2-1/2	3	C60624	C72348
5/16	.3125	5/16	1-1/4	3-3/4	3	C60625	C72349
5/16	.3125	5/16	2-1/8	4	3	C60626	C72350
3/8	.3750	3/8	1/2	2	3	C60627	C72351
3/8	.3750	3/8	1	2-1/2	3	C60628	C72352
3/8	.3750	3/8	1-1/2	3-1/2	3	C60629	C72353
3/8	.3750	3/8	2-1/2	6	3	C60630	C72354
7/16	.4375	7/16	9/16	2-1/2	3	C60631	C72355
7/16	.4375	7/16	1-1/4	2-1/2	3	C60632	C72356
7/16	.4375	7/16	2	4	3	C60633	C72357
1/2	.5000	1/2	5/8	2-1/2	3	C60634	C72358
1/2	.5000	1/2	1-1/4	3	3	C60635	C72359
1/2	.5000	1/2	2	4	3	C60636	C72360
1/2	.5000	1/2	3-1/8	6	3	C60637	C72361
5/8	.6250	5/8	3/4	3	3	C60638	C72362
5/8	.6250	5/8	1-5/8	4	3	C60639	C72363
5/8	.6250	5/8	2-1/2	5	3	C60640	C72364
5/8	.6250	5/8	3-3/4	6	3	C60641	C72365
3/4	.7500	3/4	1	3	3	C60642	C72366
3/4	.7500	3/4	1-5/8	4	3	C60643	C72367
3/4	.7500	3/4	3-1/4	6	3	C60644	C72368
1	1.0000	1	1-1/2	4	3	C60645	C72369
1	1.0000	1	2	5	3	C60646	C72370
1	1.0000	1	3-1/2	6	3	C60647	C72371

Material Reference	Steel (HRc)		Stainless Steel			Cast Iron (HRc)		Aluminum and Non-Ferrous	Hi-Temp Alloy		Hardened Steel (HRc)
	Low Carbon	Alloy	Austenitic	Martensitic	PH	Gray	Nodular		Ni, Co, Fe Based Super Alloy	Titanium	
	Hardness	13-38	>38	16-38	>38	300 Series	400 series				>45
Bright								◆			
ZrN								☆			

☆ = Best Performance ◆ = Acceptable